

# site specific layout - lot 21 (garden cluster)

version - 09.01.12

lot area	524 m2
site coverage	maximum 230 m2
building platform	173 m2
building coverage	maximum 173 m2
maximum height II	7 m above existing ground level
maximum height I	n.a
ancillary structures	16 m2 (2 options) max. height 3.5 m
specific building requirements	no
on site parking /storage etc	area within set back available
driveway / access	shared access with lot 22
specific landscaping requirements	stormwater swale, hedge, structural trees, raingarden, structural planting

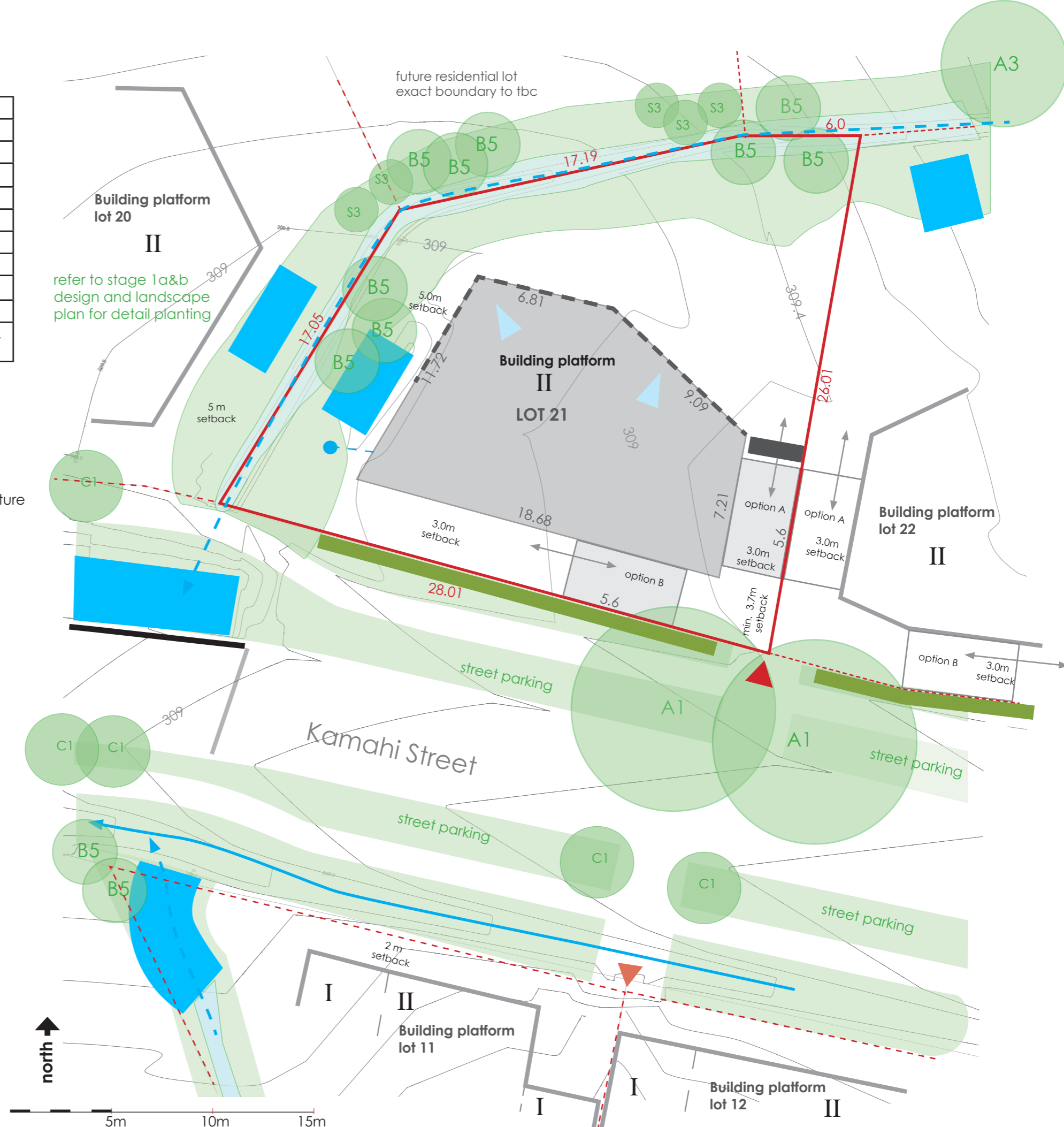
## strategic design requirements and suggestions

- ▲ shared access with lot 22 off Kamahi Street fixed location
- service area (rubbish storage, heat pump units etc.) screened
- P** long term parking of boats / trailer etc. is limited to the ancillary structure or within the southern or eastern set back if appropriately screened
- main outdoor living spaces facing NE, N and NW
- ▶ views towards mountain ranges NW, W
- roof / stormwater discharge connected to raingarden
- ancillary area for structures within the setback can be utilized for attached carports, garage, shed, conservatory etc. one option only option B can shift along building platform edge
- D**<sub>esign</sub> no specific requirements

## strategic landscaping (street and/or cluster specific) protected

- structural hedge within street reserve protected (planted by KPRA\*) max. height 2.5m
- structural trees protected (planted by KPRA\*) refer to plant schedule for detail
- buffer planting along stormwater channel to safeguard integrity of storm water system, plants protected, maintenance by lot owner (planted by KPRA\*)
- LID stormwater treatment areas, raingarden to treat stormwater runoff from roof and other impervious areas connected to stormwater swale protected by covenant
- stormwater conveyance - naturalised swale, planting and maintenance by KPRA\*
- stormwater conveyance - formed channel, planting and maintenance by KPRA\*

KPRA\* - Kirimoko Park Residents Association Inc.



all dimensions and levels to be confirmed on site  
boundary dimensions subject to final land transfer survey

